

West Whitlawburn News

July 2011 Issue

Do YOU want a Pharmacy for Whitlawburn?

If so here's what YOU must do

**Make yourself
heard:**

The consultation period
from 27th July-16th
August is the time to
show your support.

Attend the Open Night in
the Resource Centre on
Wednesday **3rd August**
at **7pm** and show your
support.

You must write to:

Whitlawburn Pharmacy Consultation

c/o Kyle Square Ltd

29a Stewarton Drive

Cambuslang

G72 8DF

Or write to West Whitlawburn Housing Co-operative for the
attention of Paul Farrell before 16th August.

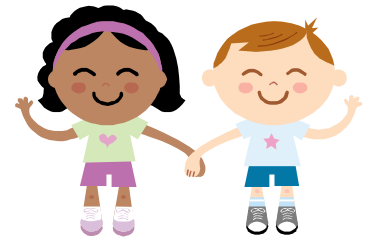
Or Email: whitlawburnpharmacy@live.co.uk



Say YES
to the
Whitlaw-
burn
Phar-
macy.

*Please make a permanent
and positive contribution to
this neighbourhood.*

New Toddlers Play park opens



Whitlawburn Community Resource Centre are pleased to announce the opening of the Toddlers Play Area.

“We hope that this new facility will be a well used addition to the area and enjoyed by the local community”. Said Community Development Co-ordinator Stephanie McPeake.

The Play Park was funded by Peoples Postcode Trust, West Whitlawburn Housing Co-operative and from fund raising done by the local Mother and Toddlers group who attend the Resource Centre every Tuesday.

Since its opening the play park has been immensely popular with local kids particularly during the recent spate of nice weather. The Play Area is situated at the front of the Resource Centre which you can access from the entrance at Albany Terrace.



Committee members needed!

The housing co-operative is looking for new committee members...is that you?

If you have thought about becoming a committee member in the past NOW is the time to join. The AGM will be in August and we will be starting a new year on the committee. The Committee is made up of both experienced members but also some newer members who have joined in the past few years. Their experience and understanding as well as training and support from the staff means that you'll never feel out of your depth on issues we discuss at the Committee meetings.

Commitment:

A minimum of 3 to 5 hours per month for committee meetings or more if you'd like to join sub-committees. Training will be provided and can be fitted around your current commitments and will not be too demanding.

Job specification:

If you want to make this community the best it can be then you almost certainly have what it takes to make choices that'll help West Whitlawburn. You might not think you have much experience or much confidence but your input would be very valuable.

Please feel free to contact Susan Paton, spaton@wwhc.org.uk for further info.

THE CENTRE CIRCLE FIVE A SIDE PITCH

Mon - Fri 9.30am to 7.30pm

Sat/Sun 10.30am to 3.30pm

57 Belmont Road, Whitlawburn (at Whitlawburn Resource Centre)

Games from £20 per hour off peak

**Book online at www.thecentre.org.uk
Or call 0141 641 5005**



Football Parties

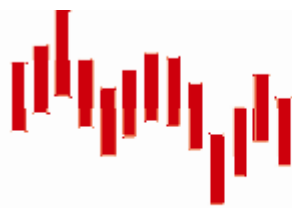
at the THE CENTRE CIRCLE
FIVE A SIDE PITCH

**Give your child a day to remember
with a fantastic value for money
football party**

Packages from £56

**To book your party or for more information
call 0141 641 5005
or pop into Whitlawburn Community Resource Centre**

Whitlawburn Community Resource Centre & The Centre Circle. 57 Belmont Road, Cambuslang
Phone: 0141 641 5005. www.whitlawburnrc.org.uk, www.thecentre.org.uk



CamGlen Radio



Camglen Radio are delivering SQA courses in Radio Feature Production:
To find out more or to book your place call Martin on 0141 646 0123 or pop into the CHI
offices at West Whitlawburn Community Resource Centre.

CHI and Whitlawburn Housing Co-op have managed to secure funding to continue providing local residents the opportunity to study towards an SQA qualification in Radio Production.

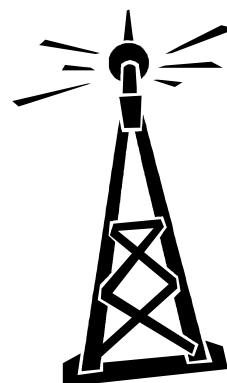
Camglen Radio, in partnership with North Glasgow College, have been delivering the SQA courses for the last 18 months from the Whitlawburn Community Resource Centre.

Places are limited to residents of WWHC so get in touch to book a place on the next course.



Some of the course benefits are:

- Free to WWHC residents
- Open to all ages over 16
- The chance to meet new people
- State of the art equipment
- Create your own Radio Show
- Builds confidence
- Flexible timetable
- Studio on your doorstep
- An insight into further Media Studies
- Experienced tutor
- Relaxed atmosphere
- Build on your computer skills



Healthy Mums Programme



Baby Massage

Why massage your baby? Baby massage has benefits for both parents and babies. It promotes bonding, Relieves colic, Relaxes babies and promotes sleep. Our next course dates are now:

15th, 22nd, & 29th August

11.45am – 12.45pm

Here at Whitlawburn Community Resource Centre in the Mull Room. Cost £21 for 3 sessions

Attendance on all 3 dates is recommended

For further information or to book a place please contact: Lesley or Louise on 0141 646 0123 or email to lesley@healthynhappy.org.uk or visit our website at www.healthynhappy.org.uk

The Parent Café

The Parent Café is a drop in centre open each **Wednesday 11.30am and 1.30pm.**

For a donation of £2 per week we aim to provide a relaxed and friendly environment where you can meet other parents of new babies and enjoy light refreshments while getting practical help, support and ideas on enjoying you new baby

For further information contact Lesley or Louise on 0141 641 0123 or email to lesley@healthynhappy.org.uk

General conditions

Please note that the times, dates or venues are subject to change, or cancellation

CHI Stress Management



Friday Relaxation & Meditation Group

- | | |
|-------------------------------------|---|
| Friday 5th August | Welcome Beginners – this session is for you if you are new to Relaxation or To CHI, with Julie |
| Friday 12 th August | Practical Relaxation session with Karen |
| Friday 19 th August | Practical Relaxation session with Jayne |
| Friday 26 th August | Practical Relaxation session with Julie |
| Friday 2nd Sep | Welcome Beginners – this is the session for you if you are new to Relaxation or to CHI with Jayne |

General conditions

Please note that the times, dates or venues are subject to change, or cancellation.



South Lanarkshire College will soon be starting the very popular “Modern Office Skills” and “Gateway to Employment” courses in the Resource Centre. If you are interested in any of the courses please contact Vicki Carss on 01355 807481 or email Vicki.carss@slc.ac.uk

established 2004

Registered with SCSWIS

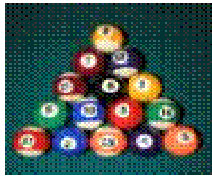
OUT OF SCHOOL CARE BONUS BALL

high quality, affordable childcare from 4½ to 16 years

We accept childcare vouchers

Young Ones Youth Club

Whitlawburn Community Resource Centre, top of Belmont Road



Bored hanging about with nothing to do?

Well there's a Youth Club on Every Thursday evening from 6pm to 8pm

And there's LOTS to do!

£1 Entry

with all the money re-invested in the club



Here's what we got!



Play station 3

Xbox 360

Nintendo

On-line

Kinect

Wii

Brand New 3G flood lit 5 A-side pitch (£1 per player)

Hair and Beauty

Arts and Crafts

Baking & Cooking

Pool, Darts & Badminton

Music and DVD nights

Street Dance, Hip Hop and fitness group

Or get involved in -

Youth News Letter Group

Multi media film/photo projects

Youth Club Committee

For more Info feel free to call Liz or Mick on 0141-641-5005 or just drop in

Whitlawburn Pharmacy

What YOU can do to help.

An application is being prepared for submission to NHS Greater Glasgow & Clyde for permission to open a new pharmacy at:

Unit 5, 151 Western Road, Whitlawburn.

(In the old 'Racing Colours' bookmakers).

Previous applications for Whitlawburn have been refused by the NHS.

The public have a right to express their views in writing, and letters or emails will be forwarded to the Health Board for consideration.

If you can provide insight into the requirement for a pharmacy in Whitlawburn please respond to the address below during the consultation period of **27th July — 16th August, 2011.**

Your opinion is vital

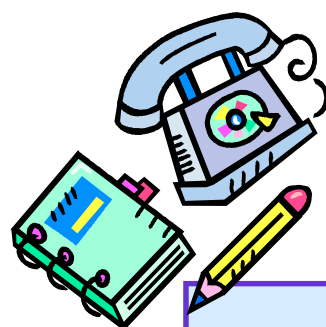
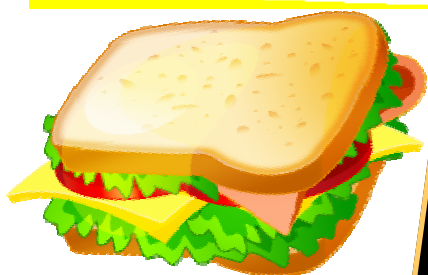
Whitlawburn Pharmacy Consultation
c/o Kyle Square Ltd
29a Stewarton Drive
Cambuslang
G72 8DF

email: whitlawburnpharmacy@live.co.uk

'Open Night'

hosted by the applicants at the
Whitlawburn Resource Centre
Wednesday 3rd August
at 7pm

Come along and find out more.



G-tea's Café
 at
 Whitlawburn Community Resource Centre
 57 Belmont Road, Whitlawburn, Cambuslang
 G72 8PG. Tel: 0141 641 5005

Open Monday - Friday from 8.30am to 4pm

MENU

Lentil Soup
 served with a roll or brown bread.....£1.50

Soup of the day
 served with a roll or brown bread.....£1.50

Souper Deal
 Soup, sandwich or filled roll & fruit.....£2.65

Sandwiches from (one filling).....£1.25

Baked Potatos (one filling with salad)....£1.80

Additional fillings.....40p

Portion of chips.....£1.30

**Chips and
 curry sauce or cheese.....£1.50**

Full Breakfast.....£3.50

Filled Rolls from.....£1.10

Tea.....70p

Coffee.....85p

Hot Chocolate.....80p

Breakfast served from 8.30am to 11.30am. Lunch from 11.30 to 2pm
 Afternoon tea's/coffee's from 2pm

We can also cater for your
 function or event
 For more information please call
 0141 641 5005
 or email reception@whitlawburnrc.org.uk
 Great food, great value for money.

Useful numbers

West Whitlawburn Housing Co-operative (Office)	0141 641 8628
Whitlawburn Community Resource Centre	0141 641 5005
Concierge Station	0141 646 1924
Scottish Power (Emergency)	0845 272 7999
Scottish Gas (Emergency)	0800 111 999
Scottish Gas (General)	0800 725 076
Strathclyde Police (Cambuslang)	0141 207 4100
Strathclyde Police (Call Centre)	0141 532 5200
Strathclyde Police (Community Police)	0141 207 4101
NHS24	08454 24 24 24
Crimestoppers	0800 555 111
WWHC repair line	0141 404 6288

If you have any reason to formally complain about an aspect of service you receive or request from WWHC, initially you should raise the matter, preferably in writing, with the WWHC. If you are still unhappy you may have recourse to raise the complaint with:

Scottish Public Services Ombudsman, 4 Melville St. Edinburgh, EH3 7NS